

Time & Date Setup

- With the unit on, simply hold the ⌚ button until the minutes begin to flash (5 seconds)
- Set the correct time by using the ▲ and ▼ buttons, using the ⌚ button to switch from minutes to the hour and again to edit the day
- Use the ▲ and ▼ buttons to select the correct day: Mon-Sun
- Tap the ⌚ button to complete the process

Initiate Advanced Settings

Advanced settings must be configured before programming, to initiate:

- ① Switch off the unit by tapping the ⏻ button
- ② Simultaneously hold the ▲ and ▼ buttons

Sensor Mode

Having initiated the advanced settings, tap the **M** button to switch to Sensor Mode (02) and set to 01 by using the ▲ and ▼ buttons

There are 3 sensor modes available to choose from, Air Sensor Only (00), Floor Sensor Only (01) and Air Sensor with Floor Limit (02), you can scroll through these using the ▲ and ▼ buttons
Use the ⏻ button to switch off and save your settings



We would recommend Floor Sensor Only (01) for wetrooms where the thermostat is located outside the heated area or where the heating is only required for floor warming.

Air Sensor with Floor Limit (02) is used where the thermostat is located within the heated room and the underfloor heating is the primary heat source.

DO NOT use Air Sensor (00) for underfloor heating.

Set Your Ideal Heating Programme

With 3 different options available, choose the schedule which best suits your lifestyle. Whether that is all 7 days the same (7day), 5 days and the weekend (5/2), or just 6 days and just 1 separate day (6/1).

- Having initiated the advanced settings, tap the **M** button until you reach 07 to set your programme
- Use the ▲ and ▼ buttons to set which programme you require (00 = 5/2, 01 = 6/1, 02 = 7 day)
- Use the ⏻ button to switch off and save your settings



Alternatively, you can switch off the heating schedule altogether - to choose manual mode, simply tap the **M** button during normal operation.

Frost Protection

An active frost protection feature will ensure your substrate never falls below 10°C. Helping to reduce the heat up times and protecting the floor finish from potential damage.

- Having initiated the advanced settings, tap the **M** button continuously until you see the frost protection mode (06)
- Frost Protection mode is set to ON by default, to turn off, use the ▲ and ▼ buttons
- Use the ⏻ buttons to switch off and save your settings

Maximum Floor Temperature

- Having initiated the advanced settings, tap the **M** button continuously until you see the maximum floor temperature mode (09).
- Use ▲ and ▼ buttons to set required temperature
- Press the ⏻ button to save

Before programming your Amber-Pro please ensure you read through all these settings carefully.

- | | |
|----------------------------|---------------|
| ▲ Up | ⌚ Clock |
| ▼ Down | ☀️ Period 1 |
| ⏻ Power | 🏠 Period 2 |
| 👉 Manual Control Mode | 🏠↔️ Period 3 |
| ⌚ Programme Mode Indicator | 🏠↔️ Period 4 |
| M Menu | 🏠↔️ Period 5 |
| 🔥 Heating On | 🌙 Period 6 |
| | 🔒 Screen Lock |

For technical information contact:
technical@amberufh.co.uk
0800 056 0494

Create The Perfect Heating Schedule

Please note down the scheduled times prior to beginning programming.
By default, your Amber-Pro will be set to a 5/2 schedule. To personalise this schedule: Enter schedule mode by turning off the thermostat and hold the **M** button for 3 seconds until the ⚙️ is displayed on the screen.

5 Day Schedule

- ① You can set the start time for period 1 using the ▲ and ▼ buttons
- ② Save your start time by pressing the **M** button, and again use the ▲ and ▼ buttons to set the desired temperature. Press the **M** button to save.
- ③ Repeat steps 1 & 2 to set all 6 periods

Weekend Schedule

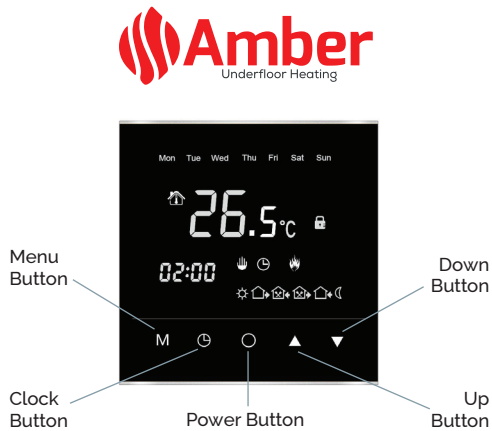
- ① After completing the 5 day schedule, press the **M** button for weekend heating
- ② The time you select will apply for both Sat and Sun
- ③ Save your start time by pressing the **M** button, and use the ▲ and ▼ buttons to set the desired temperature
- ④ Press the **M** button to advance to period 2 🏠↔️
- ⑤ Set the desired start time and temperature
- ⑥ Finally, press the ⏻ button to activate your 7 day heating schedule

Manual Control

If required you may choose to access manual control of your Amber-Pro. You can easily switch between the 👉 and your custom schedule by tapping the **M** button.

When in manual mode, you will see the manual control mode icon 👉, and can manually set a desired temperature for your room by using the ▲ and ▼ buttons.

The 🔥 symbol will appear when the desired temperature is set above the ambient room temperature.



Amber-Pro Complete Guide



Error Codes

E1



This relates to a fault with the internal temperature sensor, either through damage or disconnection. This usually requires a replacement thermostat to correct.

E2

This relates to a fault with the external floor sensor probe. Contact your electrician, who can isolate the electricity supply and check the sensor is connected and working correctly.

Screen Lock

In some situations where your Amber-Pro is installed into a location where restricted access is necessary, simply:

- Press and hold the ▼ button until the  appears on the screen (3 seconds).
- To unlock, simply repeat the process until the  disappears.

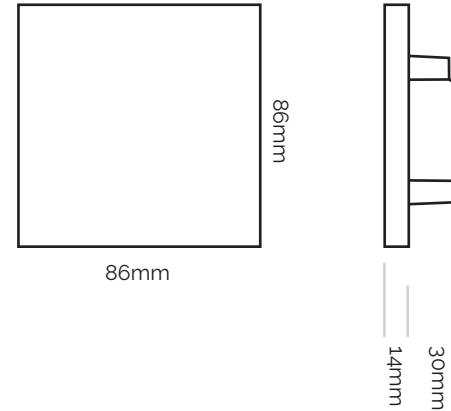
3 Simple Steps to Factory Reset

1. Having initiated the advanced settings, tap the menu **M** button continuously until you see 12
2. Use the ▲ and ▼ buttons to set to 01
3. Press the **M** buttons and switch off at the mains to complete factory reset

Advanced Settings Overview

No.	Description	Default	Range
00	Room temperature calibration	00	-10-10 C
01	Floor temperature calibration	00	-10-10 C
02	Sensor mode	00	00: built-in sensor 01: floor sensor 02: both sensors
03	Max temperature setting	35 C	30-60 C
04	Min temperature setting	5 C	5-15 C
05	Switching differential	1 C	0-10 C
06	Frost protection mode	00	00:yes 01:no
07	Heating schedule	00	00: 5/2 day mode 01: 6/1 day mode 02: 7 day mode
08	Output delay	00	0-10s
09	Maximum floor temperature	35 C	5-60 C
10	Holiday temperature	Not Used	Not Used
11	Temperature unit	00	00: °C 01: °F
12	Factory reset	00	00:no 01:reset

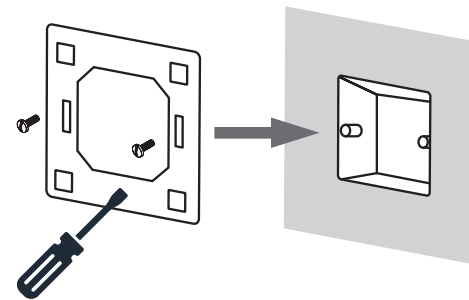
Dimensions



Installation Guide

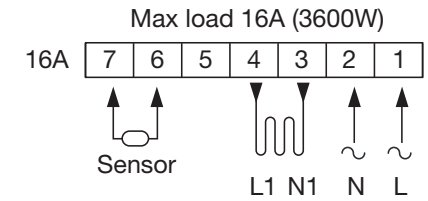
STEP 1

Mount the backing plate in the wall socket with a screwdriver before wiring takes place.



STEP 2

Ensure all wiring is undertaken by a qualified electrician.



STEP 3

After connecting the wires, mount the thermostat onto the backing plate as per pictures.

